

LASER LOUPES



Protect Two of Your
Greatest Assets...
...your **eyes.**



Orascope

LASER LOUPES

Magnification & Laser Eye Protection in a Single Product

Protection. Built-in laser protection in both the telescope and the carrier lenses (no clips or inserts required).

Compatibility. Filter options support most soft tissue laser wavelengths.

Power. Five magnification power options.

Customized. Loupes are manufactured to your specific facial geometry, working distance and declination.

The carrier lenses are made of high-index polycarbonate for peak **performance and durability.**

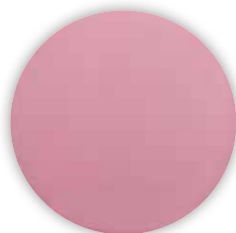


The filter in the telescope is made of the highest quality glass to afford **superior optical clarity and resolution.**

Opaque removable side shields offer additional eye protection.

Laser filter options:

Filters are available for the most popular laser wave lengths used in the dental industry.



800-830 nm



800-830 nm
940-980 nm
1064 nm
10,600 nm



940-980 nm
1064 nm
2780-2940 nm



2780-2940 nm
10,600 nm

Telescope options:



HiRes® Class II

HiRes® Galilean Loupes deliver the most important attributes a loupe can offer – high resolution, a wide and deep viewing field and lightweight comfort. The micro-sized optics are made from the highest grade glass to deliver unprecedented clarity and sharpness throughout the entire field.

Configurations: Through-the-lens (TTL)
Through-the-flip (TTF)

Field Width & Depth: 4" (10 cm)

Frame Options: Rydon, Revolution, Titanium 01

Working Distance: Customized between 10" and 27"



HiRes® Plus Class III & IV

HiRes Plus Prismatic Loupes yield higher power, higher definition, and wider fields than any other expanded field loupes available. Obtain the highest resolution and clarity for prosthodontic, endodontic and cosmetic procedures. Unique adjustable-focus feature allows you to fine tune your working distance.

Configurations: Through-the-lens (TTL)

Field Width & Depth: Class III: 3.5" (9 cm);

Class IVL: 3.0" (8 cm); Class IVH: 2.5" (6 cm)

Frame Option: Rydon, Titanium 01

Working Distance: Customized between 12.5" and 23"

Frame options:



Rydon

TTL SPORTS FRAME

Material: Advanced carbon, magnesium, silicium, and titanium

Sizes: One Size



Black Carbon Platinum Merlot Lilac



Revolution

TTF SPORTS FRAME

Material: Magnesium, silicium, titanium

Sizes: One Size

Unlimited Prescriptions via lightweight insert



Black Steel



Titanium 01

TTL STANDARD FRAME

Material: Titanium

Sizes: Small, Medium, Large



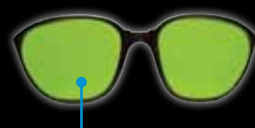
Black Slate

NEW REVOLUTION LASER INSERT

ALL FOUR LASER FILTERS AVAILABLE



REVOLUTION LOUPE



LASER INSERT & SIDE SHIELDS



LASER PROTECTION & MAGNIFICATION



COMPLETE YOUR LASER PACKAGE WITH THE
Zeon® Discovery™
PORTABLE LED LIGHT SYSTEM

All Laser Loupes Are:

- Customized to your facial geometry, working distance, & angle of declination
- Water resistant
- Corrosion resistant
- Hypo allergenic

Each Laser Loupe Package Includes:

- Black Side Shields
- Head strap
- Custom engraved storage case
- Protective lens caps

FULL protection:

*These filters are used to protect the eye against laser beams within the visible and infrared spectrum. When direct hit by a laser beam of the specified wavelength and operating condition under certain accurately defined conditions, the protection will be maintained for maximum 10 seconds or 100 pulses. **Never look directly into the laser beam.***



Powerful.
Portable.
Light-weight.



Call today to
schedule a product
demonstration:
800.369.3698

Kerr Corporation

3225 Deming Way, Suite 190
Middleton, WI 53562
T: 608.831.2555
www.orascope.com

Orascope

S u p e r i o r V i s u a l i z a t i o n ™